

**Washington Quarters
Reverse Design Varieties (RDV)
From A to H, and Beyond**

**Presented by
José Miguel Gallego
Heartland Coin Club**

**California State Numismatic Association, CSNA
48th Annual Northern California Educational Symposium
Van Nuys, CA
April 23, 2016**

(Rev. 3-26-2019)



Revisions:

Rev. 6-24-2017:

- Updated the population of Type B and Type C Washington Quarters.

Rev. 12-15-2016:

- Added temporary information about RDV-011 and RDV-012; these observations are not complete and may be entirely wrong. Hopefully, by the next revision, we should have detailed pickup points and photos.
- Added the flowcharts that were on a different document.
- Added a description and an example of how to use the eleven flowcharts.
- Added a table of contents.

Rev. 2-09-2019:

- Minor text corrections.
- Remove Type B-1 Information.

Rev. 03-26-2019:

- Removed duplicate paragraphs.
- I have clarified a few of the pickup points.

Table of Contents

Before we begin.....	Error! Bookmark not defined.
Objectives.....	4
Definitions:.....	6
A Quick Look at the Reverse Devices on the Washington Quarter	7
Reverse Die Variety RDV-001, Type A, I.....	8
Reverse Die Variety RDV-002, Type B, IIa	9
Reverse Die Variety RDV-003, Type C, IIIo	10
Reverse Die Variety RDV-004, Type D, III _{a1}	11
Reverse Die Variety RDV-005, Type E, III _{a2}	12
Reverse Die Variety RDV-006, Type F, III _b	13
Reverse Die Variety RDV-007, Type M or G, III _m	14
Reverse Die Variety RDV-008, Type H, III _b	15
Reverse Die Variety RDV-009 and Beyond.....	16
Population of Type B Quarters.....	18
Collect Common Varieties as Reference to RDVs	19
Washington Quarters RDV Availability (Up to 1972)	21
What Quarters to Look For	22
References	23
Information on Double Dies.....	25
Flowcharts.....	26

Before we begin...

Thanks!

- I want to thank Dr. James Wiles whose 2013 presentation, “Washington Quarter Reverse Design Varieties” sparked my interest in these quarters and for his support in the preparation of today’s presentation as well for answering ALL my questions.
- I will also like to thank Herbert “Herb” Hicks, whose original article “The Washington Quarter Reverse: A Die-Variety Bonanza” published in February 1986 issue of The Numismatist first report the existence of these RDVs in Quarters. I want to thank him for his support, guidance and providing access to his collection of RDV quarters.
- To my friends Ginny Bourke for inviting and encouraging me to do this presentation today and
- John Weiss for configuring the “Washington Quarters Reverse Design Varieties Set” case display.
- And to my friends at the Heartland Coin Club for their support and encouragement (and patience!).

What you should have:

- A printed copy of this presentation and
- A printed copy of the “Washington Quarters Reverse Design Varieties (RDV) Quick Reference Sheet” brochure. Very important: Updates are available at <http://heartlandcoinclub.com/links.html#link14>

Let’s quickly review this brochure since you will be using, hopefully extensively after today:

- It includes a photo for each RDV and initial pickup points or point of interests. (This presentation includes detailed pickup points and other confirmation points.)
- On the back, the table shows the RDVs with colored boxes to indicate which RDVs to look.
- At the end of this presentation, included are a set of flowcharts which will guide in identifying the RDV by a series of questions.

THE BIGGEST TIP I CAN OFFER:

- Start collecting your own Reverse RDV Set with one of each of common varieties, why?

- To learn the devices on the reverse of the Washington quarter.
- To learn about the Washington quarters reverse design varieties.
- To quickly identify each variety.
- To identify which varieties are common.
- To identify which varieties are rare.
- To learn about the three naming protocols.
- To encourage more coin collectors to collect Washington quarter RDVs.

Due to time constraints, it is not part of this presentation:

- How to grade them, when sent to be graded as a regular Quarter, indicate to attributed as RDV and type.
- What they are worth, however included are estimated values.
- History or theorize how the Mint decided to make these changes.
- Go into the details of the different dies used in the making of these varieties.
- We will very briefly look at the RDV-009 through RDV-014 (1972-1998) and RDV-015 and on (1999-2016).

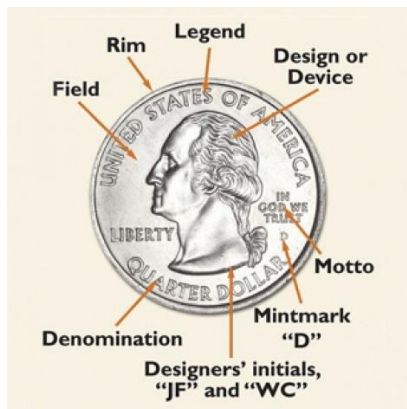
Definitions:

Transitional Reverses: A transitional design variety by definition for the Wexler Die Variety Files is a working die on which the design for a given year was used the year before it was meant to be used, or on a working die during a year after it was removed from use. Subtle differences in design details can differentiate dies used in different years. Whether accidental or purposeful, obverse dies are sometimes mated with a reverse die meant for a previous or subsequent year.

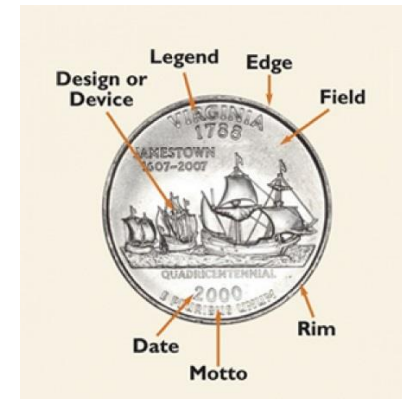
Reverse Die Variety: Cover only changes on the reverse side of coinage series. Just about every contemporary coinage series have a variation of their reverse design. Sometimes the changes are so insignificant that people do not notice and, in some cases, they are quite noticeable. Many reverse design varieties examples exist, in coinage such as Lincoln Cents, Washington Quarters and Kennedy Half series, just to mention a few.

Parts of a Coin

Obverse, or “heads” side of a 2000-D Statehood quarter. The obverse side, depicting the portrait or bust design, in this case, of President George Washington.



Reverse, or “tails” side, of a 2000-D Statehood quarter. This a good example of the design on reverse changes while obverse remains unchanged.



Edge: the very outer side of the coin. Because the edge can be treated in many ways, it is often referred to as the coin’s third side.


Relief: the part of the coin’s design which is raised above the coin surface or field. Coins can be struck in many degrees of relief from low relief circulation coins all the way to ultra-high relief collector’s coins.

Weight and Fineness: The weight, metal content, and purity of a precious metal coin.



A Quick Look at the Reverse Devices on the Washington Quarter

1. The quality of the relief design in general and business vs. proof strike.
2. Spacing and serif location of the “E” and “S” in the USA.
3. The quality of EPU.
4. Leg of “N” in EPU, short or long.
5. Serif on N in EPU.
6. M in EPU brackets with IB?
7. Feather on the back of the head of the Eagle.
8. Primary wing feathers, quality, and shape.
9. Secondary wing feathers, quality, and shape.
10. The shape of the wings tip.
11. Far left leaf next to the arrow tips, shape, and position.
12. Leaf next to the arrow tips, shape, and position.
13. Characteristics of the arrow tips.
14. Leaf below the arrowheads, shape, and position.
15. Arrow’s ribbon or barbed wire (as an X), is it complete?
16. The quality of the feathers of the arrow.
17. The quality of the tail feathers (rectrices).
18. Leaves below tail feathers, shape, and position.
19. General description of the Viewer’s left branch.
20. General description of the Viewer’s right branch.
21. The condition of the “Q” in QUARTER, doubled?
22. “U” in Quarter touched by leaf above it?
23. Characteristics of the leaf above the “A” of DOLLAR.
24. The condition of Rim.









Identifiers	Years to look	
<ol style="list-style-type: none"> 1. <i>In general, weak strike and low, "rounded" relief.</i> 2. "ES" close with "S" serif higher than the "E" serif. 3. "Normal" EPU 4. <i>Long leg "N"</i> 5. <i>No serif on N*.</i> 6. M does not bracket with IB. 7. Eagle has a feather on the back of the head. 8. Weak primary wing, viewer's Right. 9. Medium secondary wings. 10. The right-wing tip is round, fading into the field. 11. <i>The far left leaf is quite weak with a rounded tip, quite below right leaf and bud to the left*.</i> 12. Leaf below arrow tips with lower relief design. 13. Sharp pointed arrows 14. Low relief, weak, rounded-tip leaf behind arrow's heads. 15. Fully visible arrow's ribbon (as an X). 16. Very weak feathers at the end of the arrow. 17. Weak tail feathers. 18. Weak and rounded leaves below tail feathers. 19. Leaves on the left branch have a "rounded", weak relief. 20. Leaves on the right branch have a "rounded", weak relief. 21. "Q" in QUARTER is normal, no doubling. 22. "U" in Quarter not touched by leaf. 23. <i>Very weak to missing leaf above the A of DOLLAR and not connected to A*.</i> 24. Normal business strike rim. 	<p>Issued from 1932 through 1964 as business strikes and the 1936 proof strikes.</p> <p>All the above common</p>	


Identifiers	Years to look	
<ol style="list-style-type: none"> 1. Proof-like reverse, the eagle has greater detail, high relief, and a slight coin rotation. 2. <i>"ES" separated with "S" and "E" serifs leveled*.</i> 3. EPU is of Proof quality of lettering. 4. Short leg "N" (<i>notice the width of the slanted bar in "N"</i>) 5. <i>No serif on N*</i> 6. <i>"M" is bracket the "IB"*</i>. 7. Eagle has a feather on the back of the head. 8. High relief left primary wing feathers. 9. Medium secondary wing feathers, separation of feathers not well-defined. 10. <i>Sharp, pointed left wing tip*.</i> 11. Far left leaf has a very sharp tip, below the bud. 12. <i>Pointed (nipple) leaf above arrow tips, slightly leaned to the left and high relief*.</i> 13. Arrow tips are rounded. The top arrow tips are touching the leaf. 14. "Spoon" leaf behind and below the arrowhead, almost touching arrow's shaft. 15. Fully visible arrow's ribbon (as an X). 16. Sharp arrow feathers. 17. Medium relief tail feathers. 18. Two leaves are touching the tail feathers, the third looks cut off. 19. Leaves on the left branch are well-defined; leaves on top of the left wing may have weak leaf tips. 20. Leaves on the right branch are well-defined; leaves on top of the right wing may have weak leaf tips. 25. <i>"Q" in QUARTER is normal, no doubling.</i> 21. "U" in Quarter is touched by the top leaf. 22. <i>Very strong and connected leaf above the A of DOLLAR.</i> 23. Normal Business Strike Rim. 	<p>Issued as proof strikes from 1937 through 1942 and from 1950 through 1964.</p> <p>All above relatively common</p> <p>Issued as business strikes from 1956 through 1964.</p> <p>Not common: 1956, 1957, 1958, 1959, 1960, 1961, 1962, 1963 and 1964.</p>	  
<p>One additional pickup point is the branch on top of the "T" in QUARTER, is larger and runs parallel to the top of the "T"*</p>		


Identifiers	Years to look	
<ol style="list-style-type: none"> 1. <i>Devices are strengthened, overall medium relief and low profile, "flat" looking.</i> 2. "ES" close with "S" serif higher than the "E" serif. 3. EPU is thick and flat. 4. Short leg "N" 5. <i>Serif on N of UNUM*.</i> 6. M does not bracket with IB. 7. Eagle has a feather on the back of the head. 8. <i>Strengthened primary wings feathers. A stronger lower edge of the left wing*.</i> 9. Strengthened secondary wings feathers. 10. Right and left wing tips are well-defined, round, do not fade into the field. 11. Far left leaf well-defined, pointed, wide, slightly below the bud. 12. Sharp, pointed, well-defined leaf below arrow tips. 13. Sharp arrows tips arrows separated from the leaf. 14. Sharp-leaf behind, below and away from the arrowhead. 15. Fully visible arrow's ribbon (as an X). 16. Sharp arrow feathers. 17. <i>Very sharp, strong and raised tail feathers, more "square and raised", and a very distinct centerline on each feather*.</i> 18. <i>Leaves and tail look "flat". All three leaves have quite pointed tips and barely touching the tail feathers*.</i> 19. All leaves on the left branch are well-defined with strong leaf tips. 20. All leaves on the right branch are well-defined with strong leaf tips. 21. "Q" in QUARTER is normal, no doubling. 22. <i>"U" in Quarter is not touched by the top leaf*.</i> 23. <i>Sharp-leaf above the "A" of DOLLAR. Tip of the leaf is on the left side of the "A" and touching it*.</i> 24. Normal Business Strike Rim 	<p>Issued from 1964-D-1967 as business strikes.</p> <p>All the above common</p> <p>Not common: 1964-D, 1965 (Business Strike) and 1967 (Business Strike) are scarce to rare.</p> <p>Unconfirmed: 1965 SMS 1966 1966 SMS and 1967 SMS.</p> <p>Note: The first clad version has EPU in thick low relief letters. However, due to silver blanks, it shows up strongly on 1964 D.</p>	 

Identifiers	Years to look	
<ol style="list-style-type: none"> 1. Devices overall medium relief and low profile, "flat" looking. 2. "ES" close, with "S" serif higher than the "E" serif. 3. <i>EPU is in of low relief and wide*.</i> 4. <i>No serif on N of UNUM*.</i> 5. <i>A straight leg on "N"*</i> 6. M does not bracket with IB. 7. Eagle has a feather on the back of the head. 8. <i>Medium strength of the left primary wings feathers. Weaker and some with an incuse outline on the inner feathers of the right primary wing*.</i> 9. Strengthened secondary wings feathers. 10. Right and left wing tips are well-defined, round, do not fade into the field. 11. <i>Far left leaf weak, pointed, widest, slightly below the bud*.</i> 12. <i>Pointed-leaf and below arrow tips*.</i> 13. <i>Sharp arrow tips, arrows separated from the leaf*.</i> 14. <i>Very sharp-leaf behind, below and away from the arrowhead*.</i> 15. Fully visible arrow's ribbon (as an X). 16. Sharp arrow feathers. 17. <i>Very sharp, strong and raised tail feathers, more "square and raised", and a very distinct centerline on each feather*.</i> 18. <i>Leaves and tail look "flat". All three leaves have quite pointed tips and barely touching the tail feathers*.</i> 19. All leaves on the left branch are well-defined with strong leaf tips. 20. All leaves on the right branch are well-defined with strong leaf tips. 21. <i>"Q" in QUARTER is normal, no doubling.</i> 22. <i>"U" in Quarter is barely touched by the top leaf on BS. Not touched on SMS.</i> 23. The "A" of DOLLAR is not touched by the leaf, the leaf is leveled to the left and leveled with the tip of "A" 25. Normal Business Strike Rim 	<p>Issued from 1965-1969D as business strikes.</p> <p>Common for 1966 thru 1968 business strikes.</p> <p>Not common: 1969D is rare.</p> <p>Note: RDV-004 and 5 are very similar to each other and very common on the 1965 - 1967 issues and up to 1969 D. EPU appears thinner and in higher relief. The lower edge of the left wing has a very faint edge against the field. You might say it was feathered in.</p>	 

Identifiers	Years to look	
<ol style="list-style-type: none"> 1. Medium relief. 2. "S" serif is higher than the "E" serif. 3. <i>EPU is in higher relief and thinner*.</i> 4. <i>Short leg on the N*.</i> 5. <i>No serif on N of UNUM*.</i> 6. M does not bracket with IB. 7. <i>Eagle has almost no feather on the back of the head*.</i> 8. Medium strength of the left primary wings feathers. 9. <i>Medium strength of the left secondary wing. Inside feathers of the right secondary wings feathers are faint and some with an incuse outline on top and weak at the bottom*.</i> 10. Right and left-wing tips are well-defined, round, do not fade into the field. 11. <i>Far left leaf weak, pointed, narrowest, slightly below the bud*.</i> 12. Left leaf is rounder and closer to the arrowheads than RDV-004. 13. <i>Rounded arrow tips, the top arrow tip slightly smaller. The top arrow tips far apart from the leaf*.</i> 14. Pointed-leaf behind below and closer to the arrowhead than RDV-004. 15. Fully visible arrow's ribbon (as an X). 16. Sharp arrow feathers. A large gap between arrow feathers and on the back leaf. 17. Very sharp, strong and raised tail feathers and nicely separated with a round finish. 18. <i>All three leaves have quite pointed tips, first and second, barely touching the tail feathers, the third one is not touching them*.</i> 19. All leaves on the left branch are well-defined with strong leaf tips. 20. All leaves on the right branch are well-defined with strong leaf tips. Leaf above right the branch is barely visible. 21. <i>"Q" in QUARTER is normal, no doubling*.</i> 22. Leaf far from "U". 23. The "A" of DOLLAR is not touched by the leaf. 24. Normal Business Strike Rim 	<p>Issued from 1965-1968 and in 1969D as business strikes. As Proof in 1968S.</p> <p>Common for: 1965 thru 1968 business strikes and special mint strikes. Common for 1968D and 1969D business strikes.</p> <p>Not common: 1968S (proof) which are extremely rare.</p> <p>Notes: RDV-004 and 5 are very similar to each other and very common on the 1965 - 1967 issues and up to 1969 D. The lower edge of the left wing has a very faint edge against the field.</p>	  

Identifiers	Years to look	
<ol style="list-style-type: none"> 1. <i>Medium relief. Rather sharp relief*.</i> 2. <i>"S" serif higher than the "E" serif.</i> 3. <i>EPU is similar to Type C, Illa, but a bit higher in relief*.</i> 4. <i>A straight (long) leg on the N*.</i> 5. <i>Serif on N of UNUM*.</i> 6. M does not bracket with IB. 7. <i>Almost no feather on the back of the head*.</i> 8. The inside of the left primary wing sharper than Type C, Illa, and has a stronger lower edge of the left wing like Type C. 9. Secondary wings are sharp and defined. 10. Right, and left-wing tips are well-defined, right wing tip it is quite rounded. 11. <i>Far left leaf shorter than others, leveled with the bud*.</i> 12. <i>Left leaf shows a clear vertical and tighter pointed tip and doubling on the left by the tip*.</i> 13. <i>Rounded arrow tips, same length. The top arrow tips closer to leaf*.</i> 14. Pointed-leaf behind below is closer to the arrowhead than RDV-005. 15. Fully visible arrow's ribbon (as an X). 16. Sharp arrow feathers but feather tips are not sharp. There is a medium gap between the back leaf. 17. Very sharp, strong and raised tail feathers. Feathers are separated with a round finish. 18. <i>All three leaves have quite pointed tips, first and second, barely touching the tail feathers, the third one is not touching them*.</i> 19. All leaves on the left branch are well-defined with strong leaf tips. 20. All leaves on the right branch are well-defined with strong leaf tips. Leaf above right the branch stem is well-defined. 21. <i>Master doubling on lower leaves and Q of QUARTER most noticeable on the inside edge of the top of the Q*.</i> 22. "U" in Quarter is just touched by top leaf. 23. The leaf on top of the "A" of DOLLAR is above and in front of it. 24. Normal Business Strike Rim 	<p>Issued from 1967-1972D as business strikes.</p> <p>Common for 1968, 1968D, 1969, 1970, 1970D, 1971, 1971D, 1972, 1972D business strikes.</p> <p>Not common: 1967, 1968S and 1969D.</p> <p>Unconfirmed: 1967 SMS.</p> <p>Notes: One additional pickup point is the branch on top of the "T" in QUARTER, is wider.</p>	  

Identifiers	Years to look	
<ol style="list-style-type: none"> 1. Medium relief 2. "S" serif is higher than the "E" serif. 3. <i>EPU is in higher relief and thinner*.</i> 4. <i>A straight (long) leg on the N*.</i> 5. <i>No Serif on N of UNUM*.</i> 6. M does not bracket with IB. 7. The feather on the back of the head is larger. 8. <i>High relief of both primary wings feathers*.</i> 9. <i>Very high relief of both secondary wings feathers. The bottom of the wings is very sharp and can be felt with fingernail*.</i> 10. Right and left wing tips are well-defined, round, do not fade into the field. 11. <i>Far left leaf is longer than in other varieties, has been extended upwards and appears doubled, pointed and almost on the back leaf*.</i> 12. <i>Rounded leaf below arrow tips, has a spoon-like shape with doubling*.</i> 13. <i>Rounded arrow tips, same length. The top arrow tips closer to leaf*.</i> 14. Pointed-leaf behind and below the arrowhead is closer to the arrowhead and arrow shaft. 15. Missing top of the arrow's ribbon (as an X). 16. Sharp arrow feathers and tips. There is a medium gap with the back of the leaf. 17. <i>All three leaves have quite pointed tips, all touching the tail feathers*.</i> 18. Very sharp, strong and raised tail feathers. Feathers are nicely separated with a round finish. 19. All leaves on the left branch are well-defined with strong leaf tips. 20. All leaves on the right branch are well-defined with strong leaf tips. Leaf above right the branch stem is well-defined with strong leaf tips. 21. <i>Master doubling on lower leaves and inside edge of the top of the Q of QUARTER*.</i> 22. "U" in Quarter is barely touched by the top leaf. 23. Leaf not touching "A" 24. Normal Business Strike Rim 	<p>Issued from 1968S thru 1970D strikes.</p> <p>Common for 1968S proof strikes and for the 1969 and 1970D business strikes.</p> <p>Not common: 1969D and 1970.</p> <p>Notes: Most 1968 S and most 1970 D mint sets are type G. The type G also appears on a minority of the 1969 D and the 1970 Philly.</p> <p>Type G was made from Type F artwork, Type F does not have Serif on N of UNUM.</p>	

Identifiers	Years to look	
<ol style="list-style-type: none"> 1. <i>Proof-like reverse, the eagle has greater detail, high relief*.</i> 2. <i>"S" serif is leveled with the "E" serif with a gap*.</i> 3. EPU is of Proof quality of lettering 4. <i>A straight (long) leg on the N*.</i> 5. <i>No Serif on N of UNUM*.</i> 6. <i>"M" is bracket the "IB"*.</i> 7. <i>The feather on the back of the head is larger*.</i> 8. High relief feathers on both primary wings. 9. Medium secondary wing feathers. 10. <i>Both wing tips are sharply pointed*.</i> 11. Far left leaf has a very sharp tip, lengthen to be almost on the back leaf. 12. <i>Pointed (nipple) leaf above arrow tips, slightly leaned to the left and high relief*.</i> 13. The top arrow tips merged, except at tip, touching the left leaf. 14. Large round leaf behind and below arrowhead that follows arrow's head profile almost touching arrow's head and shaft. 15. Fully visible arrow's ribbon (as an X). 16. Well-defined arrow feathers, feather tips are blurry and almost touched by leaf. 17. Very sharp, strong and raised tail feathers, with centerlines in relief. 18. Two leaves are touching the tail feathers, the third looks cut off. 19. All leaves on the left branch have great detail and high relief. 20. All leaves on the right branch have great detail and high relief. 21. Leaf above the right branch stem is well-defined with strong leaf tips. 22. <i>"Q" in QUARTER is normal, no doubling*.</i> 23. <i>"U" in Quarter is touched by the top leaf*.</i> 24. The leaf on top of the "A" of DOLLAR is above and in front of it. 25. Normal Business Strike Rim. <p>One additional pickup point is the branch on top of the "T" in QUARTER, is larger and runs parallel to the top of the "T".</p>	<p>Issued from 1968S thru 1972S strikes.</p> <p>Common for 1968S thru 1972S proof strikes.</p> <p>Not common: 1969-D, 1970-D, 1971-D, and 1972-D.</p> <p>Note: The 1969D can be found with high or low mintmark.</p>	

Type	Identifiers	Years issued
RDV-009 (III _c)	Wing tips have outlines similar to III _m , leaves are touched up. The very bottom tips of the wings have a line outlining them. This hub was apparently used to make RDV-007 and 9 which also have the same master hub doubling The very bottom tip of the wings has a line outlining them. This is the first time that technique was used, but it is repeated on all 1973 and 1974 quarters [RDV-009].	Issued on ALL 1973 and 1974, P, D, and proofs S.
RDV-010	Bicentennial issue (1975) - 1976	Used on ALL 1976 (P, D, and proofs –S).
RDV-011 Preliminary NOTES (These observations may wrong, wait until finished)	Type C, IVa starting in 1977 RDV-011 Notes on the Washington 1980-P and 1980-D Reverse Varieties, RDV-011 using non-1980 reverses: <ol style="list-style-type: none"> 1. Slight to no serif on the “N” of ENUM, compared with RDV-012. 2. N and I in UNITED merged on the top serifs (and bottom on some) in proofs too. 3. Left branch tip (viewer’s left) is longer than RDV-012. 4. The distance between R and I in AMERICA is narrower than RDV-012 in proofs too. 5. Sharper arrow tip (this may due to die deterioration on RDV-012) 6. The top bar on T and E in UNITED are wider than RDV-0120. 7. The feather on the back of the head of the eagle is longer compared with RDV-012. 8. 	Used on ALL 1977, 1978, 1979 and 1980 (P, D, except 1980-S proof).
RDV-012 Preliminary NOTES (These observations may wrong, wait until finished)	Already have found two different 1981 reverses. Need to document them. RDV-012 Must check coins in albums! Notes on the Washington 1980-P, 1980-D and 1980-S (proof) Reverse Varieties, RDV-012 using non-1980 reverses: <ol style="list-style-type: none"> 1. Well-defined serif on the “N” of ENUM, compared with RDV-011. 2. N and I in UNITED are merged at the bottom and at the top. 3. Left branch tip (viewer’s left) is shorter than RDV-011. 4. The distance between R and I in AMERICA is wider than RDV-011. 5. (BS, the left serif of the “A” in QUARTER and in DOLLAR is tilted, the tip is lower than inside serif. In Proofs is leveled) NOT ON ALL 6. Far left leaf, next to arrow tips, is smaller than RDV-011. 7. I in AMERICA is thinner than in RDV-011 8. First claw in left talon and third claw in right talon are shorter than RDV-011 (this may due to die deterioration on RDV-012) 9. Leaf above the first L in DOLLAR is almost touching the L. 10. Leaf below the arrowhead is close to the shaft and above the arrowhead? 11. The bottom left inner wing is sharp? 12. The feather on the back of the head of the eagle is short compared with RDV-011. 	Used on ALL 1980, 1981, 1982, 1983, 1985 and 1985 (P, D, and proofs –S).

	<p>13. Proofs: N and I in UNITED are merged at the bottom and at the top. Except on</p> <p>14. Proof 1983: weak strike, no serif, close R and I in AMERICA</p> <p>15. Proof 1984: Weak strike, no serif, N and I in UNITED not merged</p> <p>Proof 1985: regular RDV012? In another N and I in UNITED not merged.</p>	
RDV-013		Used on ALL 1986, and proofs –S.
RDV-014		Used on ALL 1986 through 1998, and proofs –S.
RDV-015-0xx	Used from 1999 through 2018+	

Population of Type B Quarters

DATE	MS65 PCGS	MS65 NGC	MS66 PCGS	MS66 NGC	MS67 PCGS	MS67 NGC	COMBINED PCGS & NGC
1956	31	6	6	3	0	0	103
1957	67	10	63	20	14	14	252
1958	95	48	16	17	0	0	509
1959	230	110	15	13	0	0	588
1960	163	56	40	20	0	2	542
1961	61	29	19	10	0	1	195
1962	54	17	3	3	2	0	152
1963	55	38	12	21	0	1	429
1964	43	22	3	3	0	0	202

(This article was published in the March 13, 2015, issue of *the COIN DEALER CND MONTHLY SUPPLEMENT newsletter*)

Based on trying to collect them from different sources:

- 1959 is by far the most common Type B quarter.
- 1960 and 1958 are next.
- 1957, 1963 and 1964 are pretty difficult.
- 1956, 1962, and 1961 are more difficult to get than any other with 1956 being the hardest to find.

NGC and PCGS only started a couple of years ago, (and with an additional fee) and started posting the Type -B population. This is still a GREAT opportunity to acquire certified but without the Type B certification.

Collect Common Varieties as Reference to RDVs

RDV-001	RDV-002	RDV-003	RDV-004	RDV-005	RDV-006	RDV-007	RDV-008	RDV-009
Type A	Type B	Type C	Type D	Type E	Type F	Type M (or G)	Type H	
I	IIa	IIlo	IIIa1	IIIa2	IIIb	IIIm	IIb	IIlc
1932-1964 BS and 1936 Proof	1937-1964 Proofs		1966-1968D and 1965- 1967 SMS and 1968 Proof	1965, 1966- 1968D and 1965- 1967 SMS and 1968 Proof	1968, 1968-D, 1968- S Proof, 1969, 1970, 1970-D, 1971-D, 1971-S Proof, 1972- D, 1972-S Proof	1968-S Proof, 1970-D	1968-S Proof, 1969-S Proof, 1970-S Proof, 1971-S Proof, 1972-S Proof	

Summary

Quick Pickup Points for Washington Quarter RDVs*

RDV/Type	Class	Initial Identifiers	Years and Mints to look for
RDV-001 A	<i>I</i>	<ul style="list-style-type: none"> o In general, weak strike and low, “rounded” relief. o No serif on N*. o Far left leaf is quite weak with a rounded tip, quite below right leaf and bud to the left*. o Very weak to missing leaf above the A of DOLLAR and not connected to A*. 	1932-1964
RDV-002 B	<i>IIa</i>	<ul style="list-style-type: none"> o Sharp, pointed left wing tip*. o Pointed (nipple) leaf above arrow tips, slightly leaned to the left and high relief*. o “ES” separated with “S” and “E” serifs leveled*. o No serif on N* 	1956-1964
RDV-002-1 B-1		<ul style="list-style-type: none"> o Same as above, except for the sharp arrows tips, top two arrows separated from the leaf not touching the leaf. NEW!! o 	1963
RDV-003 C	<i>IIIo</i>	<ul style="list-style-type: none"> o Serif on N of UNUM*. o Strengthened primary wings feathers. A stronger lower edge of the left wing*. o Very sharp, strong and raised tail feathers, more “square and raised”, and a very distinct centerline on each feather*. o Sharp-leaf above the “A” of DOLLAR. Tip of the leaf is on the left side of the “A” and touching it*. 	1964-D, 1965, 1967
RDV-004 D	<i>IIIa1</i>	<ul style="list-style-type: none"> o No serif on N of UNUM*. o EPU is in higher relief and thinner*. o Medium strength of the left primary wings feathers. Weaker and some with an incuse outline on the inner feathers of the right primary wing. o Far left leaf weak, pointed, widest, slightly below the bud*. o Pointed-leaf and below arrow tips. o Very sharp-leaf behind, below and away from the arrowhead*. o Very sharp, strong and raised tail feathers, more “square and raised”, and a very distinct centerline on each feather*. 	1969-D
RDV-005 E	<i>IIIa2</i>	<ul style="list-style-type: none"> o EPU is in higher relief and thinner*. o No serif on N of UNUM*. o Eagle has almost no feather on the back of the head*. o Medium strength of the left secondary wing. Inside feathers of the right secondary wings feathers are faint and some with an incuse outline on top and weak at the bottom*. o Far left leaf weak, pointed, narrowest, slightly below the bud*. o Rounded arrow tips, the top arrow tip slightly smaller. The top arrow tips apart from the leaf*. 	1969-S Proof
RDV-006 F	<i>IIIb</i>	<ul style="list-style-type: none"> o Medium relief. Rather sharp relief*. o EPU is similar to Type C, IIIo, but a bit higher in relief*. o A straight (long) leg on the N*. o Serif on N of UNUM*. o Far left leaf shorter than others, on the back leaf*. o Left leaf shows a clear vertical and tighter pointed tip and doubling*. o Rounded arrow tips, same length. The top arrow tips closer to leaf*. o Master doubling on lower leaves and Q of QUARTER most noticeable on the inside edge of the top of the Q*. 	1967, 1968-S Proof, 1969-S Proof
RDV-007 M (or G)	<i>III m</i>	<ul style="list-style-type: none"> o Rounded leaf, just below arrow tips, has a spoon-like shape with doubling*. o No Serif on N of UNUM*. o Master doubling on lower leaves and inside edge of the top of the Q of QUARTER*. o Far left leaf is longer than other varieties, has been extended upwards and appears doubled, pointed and almost on the back leaf*. o Rounded arrow tips, same length. The top arrow tips closer to leaf*. o High relief of both primary wings feathers*. o Very high relief of both secondary wings feathers. The bottom of the wings is very sharp and can be felt with fingernail*. 	1969-D, 1970-P
RDV-008 H	<i>IIb</i>	<ul style="list-style-type: none"> o Proof-like reverse, the eagle has greater detail, high relief*. o “S” serif is leveled with the “E” serif with a gap*. o No Serif on N of UNUM*. o “M” is bracket the “IB”*. o The feather on the back of the head is larger*. o Both wing tips are sharply pointed*. o Pointed (nipple) leaf above arrow tips, slightly leaned to the left and high relief*. o “Q” in QUARTER is normal, no doubling*. o The branch on top of the “T” in QUARTER, is larger and runs parallel to the top of the “T”*. 	1969-D, 1970-D, 1971-D, 1972-D

Washington Quarters RDV Availability (Up to 1972) *

Date	RDV-001	RDV-002	RDV-002	RDV-003	RDV-004	RDV-005	RDV-006	RDV-007	RDV-008	RDV-010	RDV-010
	Type A	Type B	Type B-1	Type C	Type D	Type E	Type F	Type M (or G)	Type H	Details Coming Soon	
	I	Ila		IIlo	IIla1	IIla2	IIlb	IIIm	IIb		
1932-1964	Common										
1936 Proof	Common										
1937-1964 Proofs		Common									
1956	Common	Scarce									
1957	Common	Uncommon									
1958	Common	Uncommon									
1959	Common	Uncommon									
1960	Common	Uncommon									
1961	Common	Uncommon									
1962	Common	Uncommon									
1963	Common	Uncommon	Rare								
1964	Common	Uncommon									
1964-D	Common			Very Scarce							
1965				Scarce	Common	Common					
1965 SMS				Unconfirmed	Common	Common					
1966				Unconfirmed	Common	Common					
1966 SMS				Unconfirmed	Common	Common					
1967				Rare	Common	Common	Rare				
1967 SMS				Unconfirmed	Common	Common	Unconfirmed				
1968					Common	Common	Common				
1968-D					Common	Common	Common				
1968-S Proof						Rare	Scarce*	Common	Common		
1969							Common				
1969-D					Very Scarce	Common	Rare	Scarce	Rare		
1969-S Proof									Common		
1970							Common	Rare			
1970-D							Common	Common	Rare		
1970-S Proof									Common		
1971							Common				
1971-D							Common		Rare		
1971-S Proof									Common		
1972							Common				
1972-D							Common		Rare		
1972-S Proof									Common		

*Updated 12/13/2016

What Quarters to Look For

Year	Strike Type	RDV Type	RVD Numbers to Look for
1956	BS	B	☐ RVD-002
1957	BS	B	☐ RVD-002
1958	BS	B	☐ RVD-002
1959	BS	B	☐ RVD-002
1960	BS	B	☐ RVD-002
1961	BS	B	☐ RVD-002
1962	BS	B	☐ RVD-002
1963	BS	B	☐ RVD-002
1963	BS	B-1	☐ RVD-002-1 (?)
1964	BS	B	☐ RVD-002
1964-D	BS	C	☐ RVD-003
1965	BS	C	☐ RVD-003
1965	SMS	C	☐ RVD-003*
1966	BS	C	☐ RVD-003*
1966	SMS	C	☐ RVD-003*
1967	BS	C, F	☐ RVD-003, ☐ RDV-006
1967	SMS	C, F	☐ RVD-003*, ☐ RDV-006*
1968-S	Proof	E, F	☐ RVD-005, ☐ RVD-006
1969-D	BS	D, F, M(G),H	☐ RVD-004, ☐ RDV-006, ☐ RDV-007, ☐ RDV-008
1970	BS	M(G)	☐ RVD-007
1970-D	BS	H	☐ RVD-008
1971-D	BS	H	☐ RVD-008
1972-D	BS	H	☐ RVD-008

BS= Business Strike SMS= Special Mint Set *= Unconfirmed

(This list does not include the new Washington quarters minted from 2000-2015)

References

Washington Quarter Reverse Varieties:

- [The Washington Quarter Reverse: A Die-Variety Bonanza](http://www.exacteditions.com/read/thenumismatist/february-1986-44029/6/3), <http://www.exacteditions.com/read/thenumismatist/february-1986-44029/6/3>
- [The TYPE B Proof Reverse Washington Quarters of 1956-1964 An Unprecedented Variety Part 1](http://www.coinweek.com/expert-columns/us-coins-proof-reverse-washington-quarter-1956-1964-part-1/), <http://www.coinweek.com/expert-columns/us-coins-proof-reverse-washington-quarter-1956-1964-part-1/>,
- [1964-D quarter with the “Type C” reverse of 1965](http://www.error-ref.com/transitional-reverse-1964-d-quarter/), <http://www.error-ref.com/transitional-reverse-1964-d-quarter/>

Mismatched business/proof dies:

- [1998-2000 business strike cents with proof-style reverse \(Wide AM\)](http://www.error-ref.com/mismatch-biz-proof-1998-00-wams/), <http://www.error-ref.com/mismatch-biz-proof-1998-00-wams/>
- [1998-S and 1999-S proof cents with business-style reverse \(Close AM\)](http://www.error-ref.com/mismatched_business__proof_dies/), http://www.error-ref.com/mismatched_business__proof_dies/
- [1969-P, 1970-P and 1970-D Roosevelt Dimes struck with 1968-S reverse proof dies](http://www.error-ref.com/transitional-reverse-1969-1970-dime-with-proof-re/), <http://www.error-ref.com/transitional-reverse-1969-1970-dime-with-proof-re/>
- [1956 -1964 quarters with “Type B” proof reverse](http://www.error-ref.com/mismatch-biz-proof-56-64-quar/), <http://www.error-ref.com/mismatch-biz-proof-56-64-quar/>
- [1956 -1963 Franklin halves with “Type 2” proof reverse](http://www.error-ref.com/mismatch-biz-proof-56-63-halves/), <http://www.error-ref.com/mismatch-biz-proof-56-63-halves/>
- [1999 \\$5 and \\$10 gold eagles struck with unfinished proof dies \(W-mintmark\)](http://www.error-ref.com/mismatch-biz-proof-5-10-gold-eag/), <http://www.error-ref.com/mismatch-biz-proof-5-10-gold-eag/>

Transitional Reverse (Minor temporal mismatches):

- [1940 nickel with reverse of 1938 or 1940](http://www.error-ref.com/transitional-reverse-1940-jeff-w-1938-1940/), <http://www.error-ref.com/transitional-reverse-1940-jeff-w-1938-1940/>
- 1939 proof Jefferson nickel obverse with 1938 reverse
- 1940 proof Jefferson nickel obverse with 1938 reverse
- [The Washington Quarter Reverse: A Die-Variety Bonanza](http://www.exacteditions.com/read/thenumismatist/february-1986-44029/6/3), <http://www.exacteditions.com/read/thenumismatist/february-1986-44029/6/3>
- [The TYPE B Proof Reverse Washington Quarters of 1956-1964 An Unprecedented Variety Part 1](http://www.coinweek.com/expert-columns/us-coins-proof-reverse-washington-quarter-1956-1964-part-1/), <http://www.coinweek.com/expert-columns/us-coins-proof-reverse-washington-quarter-1956-1964-part-1/>,
- [1964-D quarter with the “Type C” reverse of 1965](http://www.error-ref.com/transitional-reverse-1964-d-quarter/), <http://www.error-ref.com/transitional-reverse-1964-d-quarter/>
- [1988-D and P Lincoln cents with reverse of 1989](http://www.error-ref.com/transitional-reverse-1988-1c-with-reverse-of-1989/), <http://www.error-ref.com/transitional-reverse-1988-1c-with-reverse-of-1989/>
- [1992-D and P cent with “Close AM” reverse](http://www.error-ref.com/transitional-reverse-1992-cams/), <http://www.error-ref.com/transitional-reverse-1992-cams/>
- [2008-P Silver Eagle Bullion Coin with 2007-P Reverse](http://www.error-ref.com/2011-05-03/) (<http://www.error-ref.com/2011-05-03/>) and COIN WORLD SPECIAL: article posted [HERE](#) <http://www.error-ref.com/2008p-liberty-silver-bullion-with-2007-reverse/>

Sites and Forums of interest:

Washington Type B Forum – A site to talk just about Washington Quarters Type B. <http://www.washingtontype-b.com/>

American Numismatic Association – The leading organization for coin collectors. <http://www.money.org/>

ANACS – One of the two third-party grading companies who use MADdieclashes and trail dies number system on their encapsulations. <http://www.anacs.com/>

Collectors Universe Forum – All sorts of coins are discussed in this forum. <http://forums.collectors.com/>

CONECA – An organization dedicated to error and varieties. <http://hermes.csd.net/~coneca/>

Coppercoins – Doubled dies and RPMs of the Lincoln cent series are listed here with colored images. Excellent reference material. <http://www.coppercoins.com/>

Error Coin Information Exchange – Error and variety coins are posted and discussed in this formatted exchange.

<http://groups.yahoo.com/group/errorcoininformationexchange/post>

Error-ref.com – The go-to site for definitions of all error and variety coin. The site uses abundant colored images. <http://error-ref.com/>

Franklin-Lover's – An excellent site dedicated to Franklin errors and varieties <http://www.franklinlover.yolasite.com/>

Independent Coin Graders – One of the two third-party grading companies who use MADdieclashes and trail dies number system on their encapsulations. <http://www.icgcoin.com/>

Indian Cent – An excellent site dedicated to error and varieties on Flying Eagle and Indian cents. <http://indiancent.wikispaces.com/>

Lincoln Cent Resource – The best place to go to discuss Lincoln cent coins. <http://www.lincolncentresource.net>

MADdieclashes.com – An excellent site dedicated to die clashes from the United States and worldwide. Abundant colored images with denominational overlays are contained in this site. <http://maddieclashes.com/index.html>

Traildies.com – The only site dedicated to the anomalies called *trails* and *wavy steps*. <http://traildies.com/>

VAM World – A great site dedicated to errors and varieties found on Morgan and Peace dollars. <http://www.vamworld.com/>

Variety Vista – A master listing of all found doubled dies and RPMs. Dr. James Wiles, an authority on RDVs also lists newly found doubled dies and RPMs on this site. <http://varietyvista.com/index.htm>

Information on Double Dies

Flowcharts

The flowcharts in the following pages were created to help properly identify any of the Washington Quarter Reverse Die Varieties (RDV). It is a step-by-step process based on simple questions and observation. The flowcharts start assuming that you have selected it based on the date and mint mark of the Quarter.

To use them, select the appropriate flowchart for that corresponds to the year and mint of the Quarter that you would like to identify. For example, let's assume that you have a 1964 Washington Quarter that you would like to find out what RVD it is.

First, go to page 28 and you will find that the first question is "Left wing has a sharp tip?". Look at the reverse of the Quarter and look at the left wing of the eagle, on the flowcharts, that would be your right. Do you see a sharp wingtip or is it round like the one on the right (your left)?

It does not have a sharp wingtip, follow the **NO** arrow and will let you know that you have an RDV-001, Type A Quarter, a common one. You can go to page 8, to view the photo for an RDV-001, Type A; compare it by looking at the left wingtip a see if yours has the same rounded tip. If you find that it does not match and it has a sharp wingtip, go back to the flowchart and follow the YES arrow.

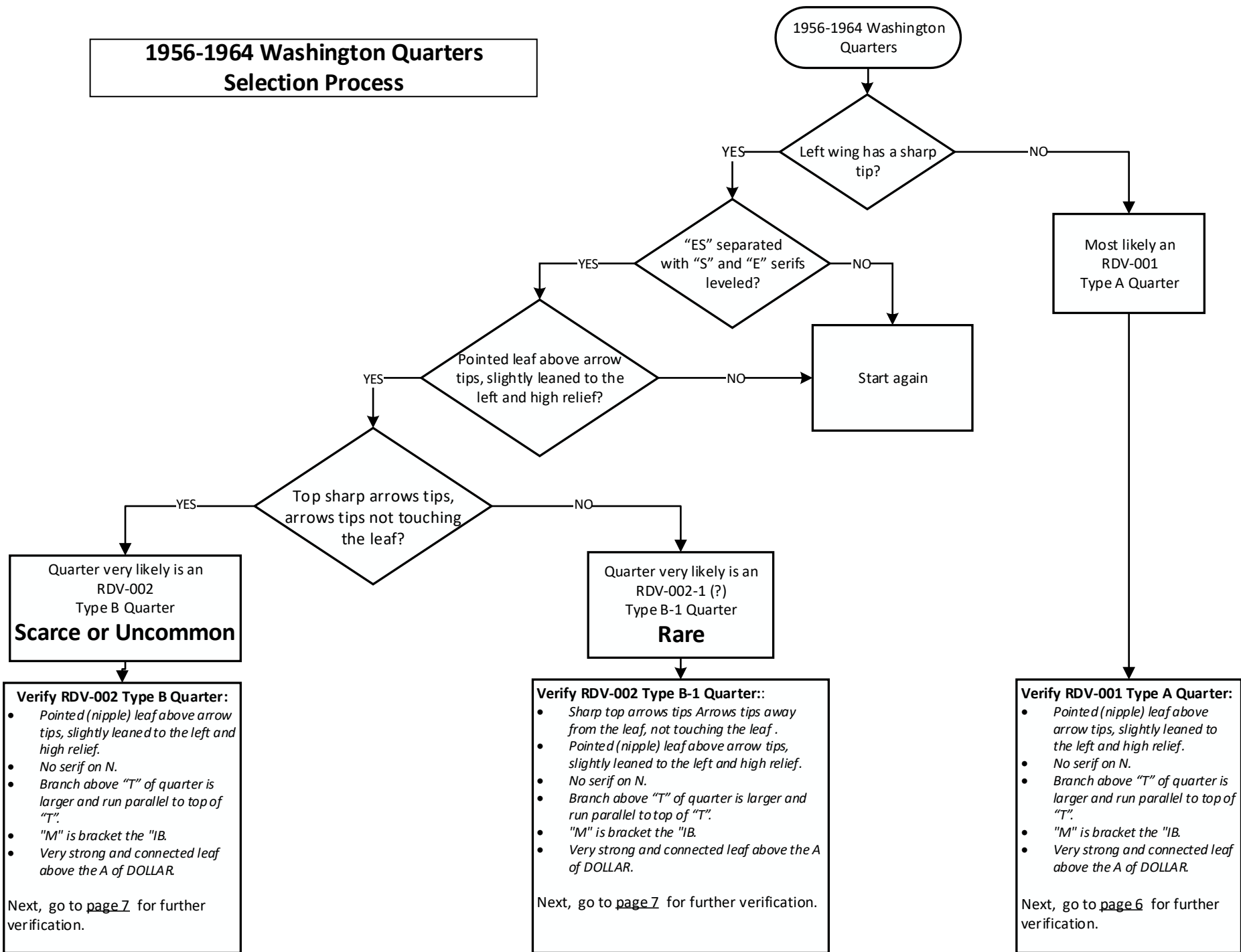
Assuming that your Quarter has the sharp wingtip, the next question you will be asked is "ES" separated with "S" and "E" serifs leveled?". If you do not understand the question, you may want to go to the "A Quick Look at the Reverse Devices on the Washington Quarter", page 7 and read about the different devices on the reverse if the Quarter, in this case, look at the number 2. You could also look at page 9, RDV-002, Type B, *IIa*, and look the last two letters in STATES.

If the answer to the question "ES" separated with "S" and "E" serifs leveled?" is yes, follow the YES arrow.

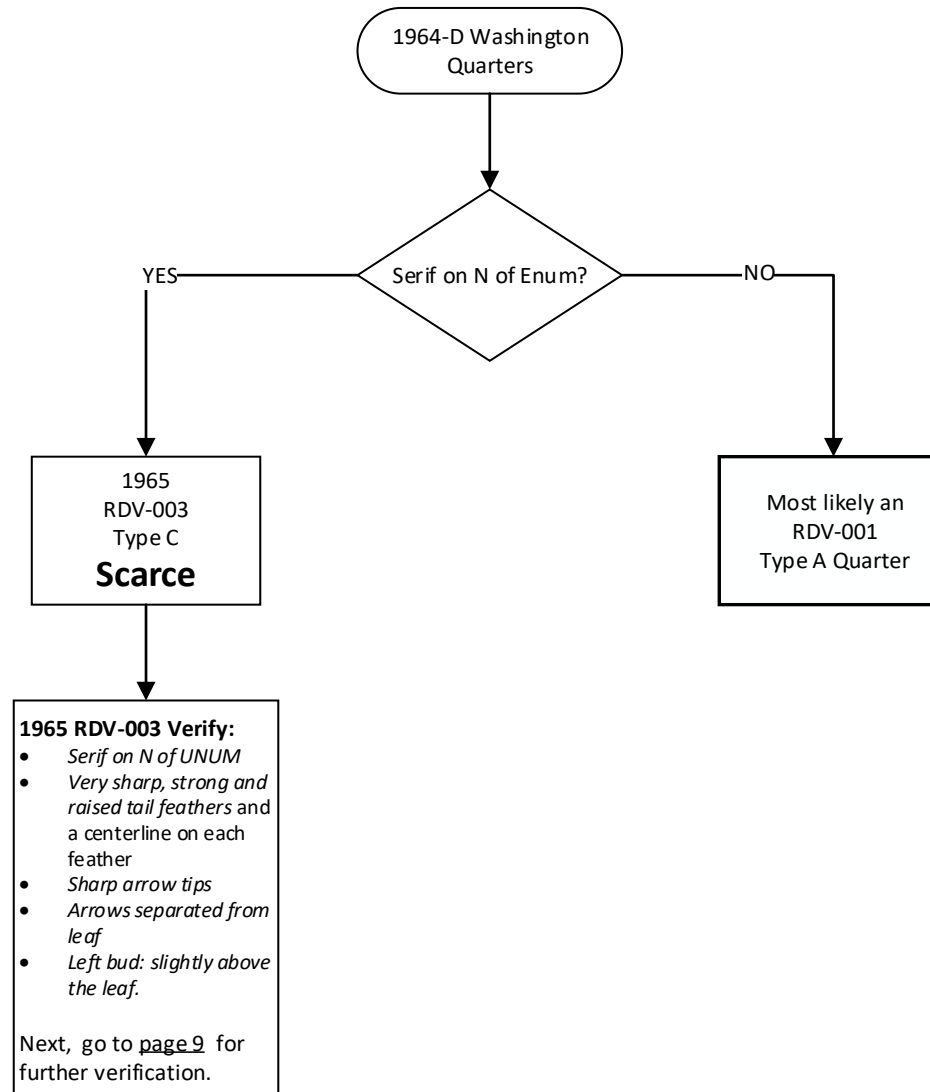
Continue answering the question by looking at the Quarter until you get to the "verify" box a the very bottom of the flowcharts. This box gives additional pickup points. If your coin passes them, you can almost be 100% certain that you have the coin that is what the "verify" box is indicating. To be 100% certain that it is, go to the page at the bottom for further verification and compare the Quarter with the photos on that page and read the additional pickup points.

A side note, there are other pickup points that you one can start when assessing (or attributing) Type B Quarters but I found that is easy to start by looking at the wingtip since it is easy to identify and you do not need a strong magnifier, saving you time. The flowchart goes from easy pickup points to harder to identify.

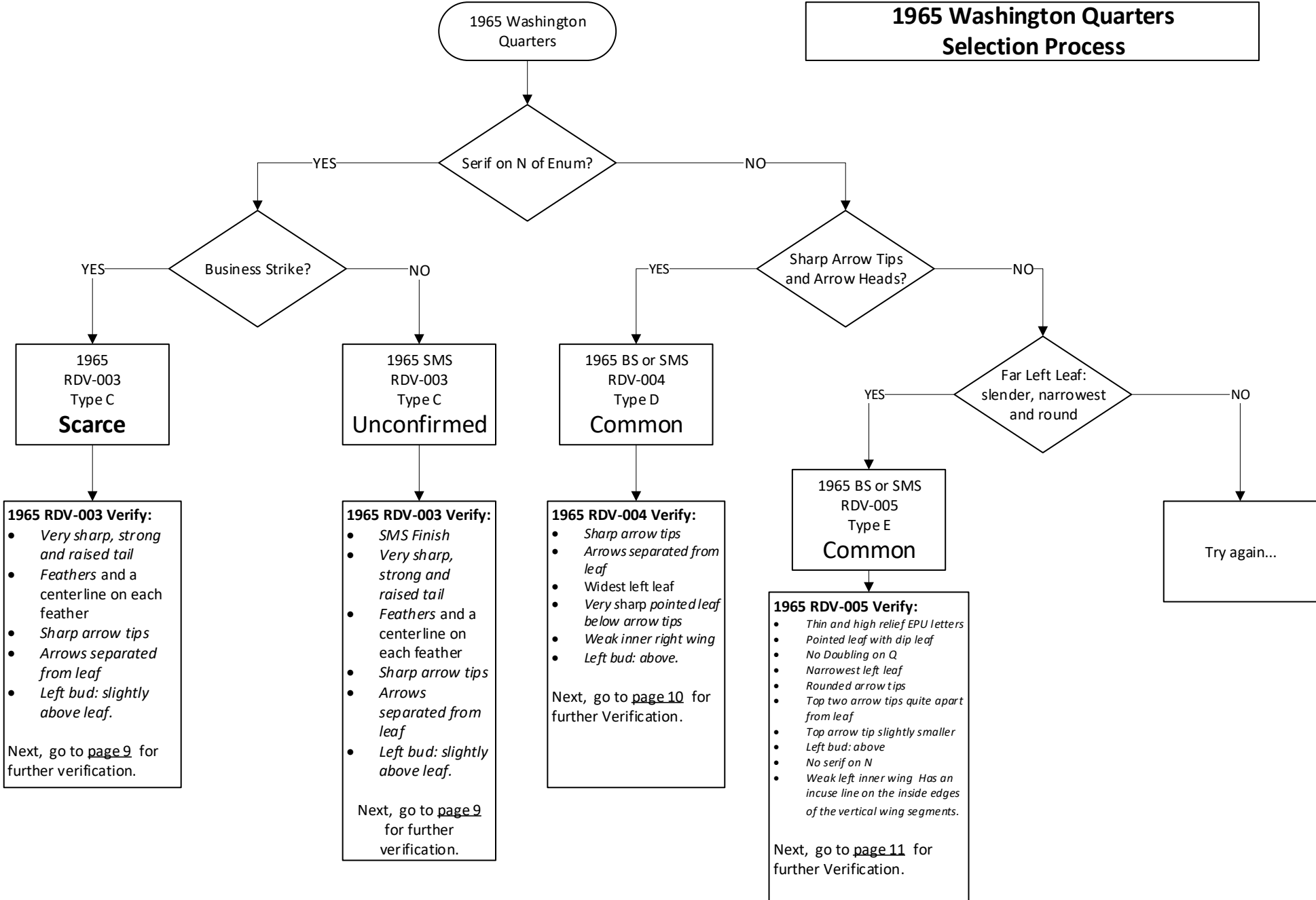
1956-1964 Washington Quarters Selection Process



1964-D Washington Quarters Selection Process



1965 Washington Quarters Selection Process



1966 Washington
Quarters

1966 Washington Quarters Selection Process

Serif on N of Enum?

YES

NO

1966 BS or SMS
RDV-003
Type D

Unconfirmed

1966 BS or SMS RDV-003 Verify:

- *Very sharp, strong and raised tail*
- *Feathers and a centerline on each feather*
- *Sharp arrow tips*
- *Arrows separated from leaf*
- *Left bud: slightly above leaf.*

Next, go to [page 9](#) for further verification.

Sharp Arrow Tips
and Arrow Heads?

YES

YES

1966 BS or SMS
RDV-004
Type D

Common

1966 BS or SMS RDV-004 Verify:

- *Sharp arrow tips*
- *Arrows separated from leaf*
- *Widest left leaf*
- *Very sharp pointed leaf below arrow tips*
- *Weak inner right wing*
- *Left bud: above.*

Next, go to [page 10](#) for further verification.

Far Left Leaf:
slender, narrowest
and round

NO

1966 BS or SMS
RDV-005
Type D

Common

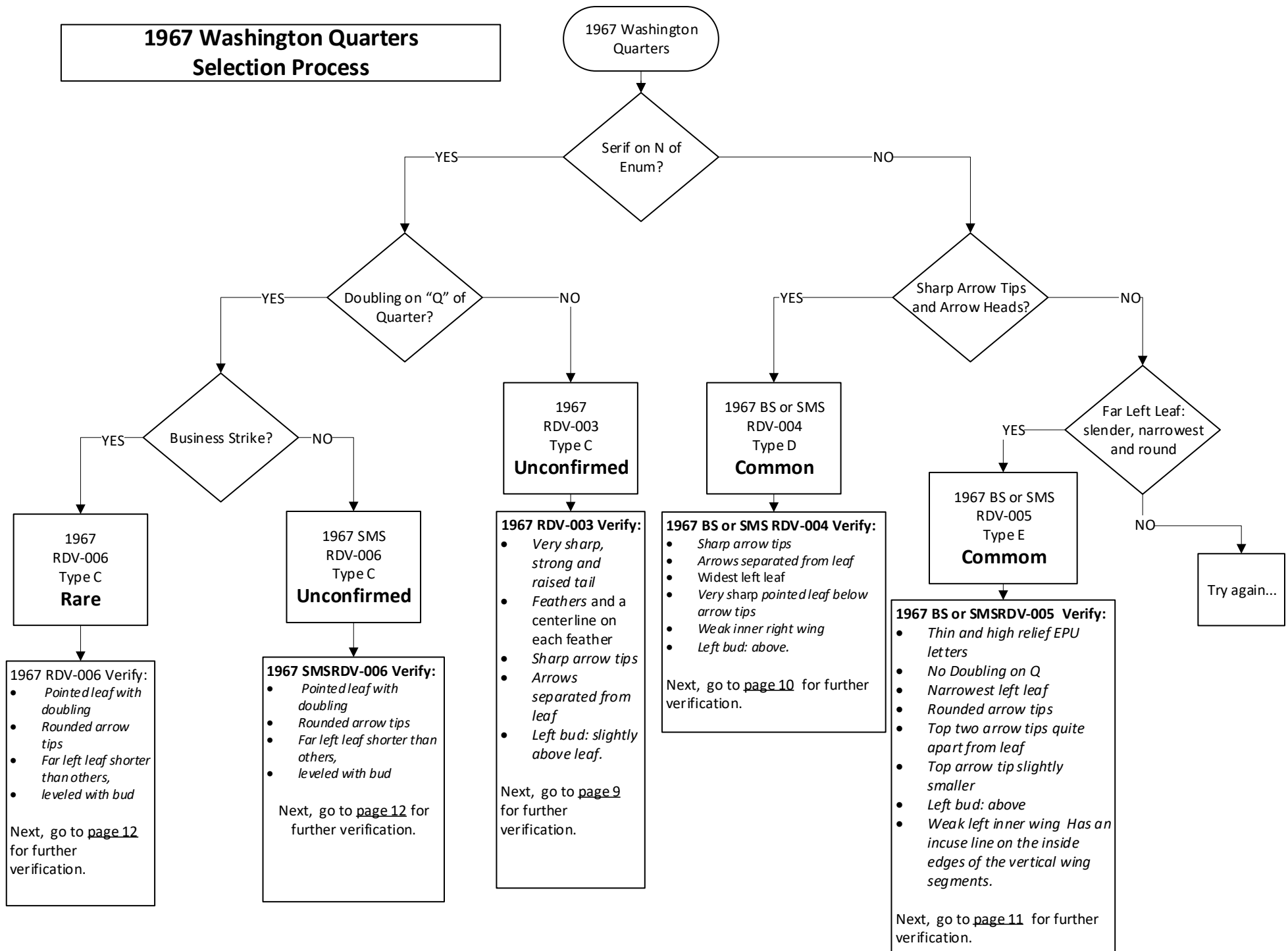
1966 BS or SMS RDV-005 Verify:

- *Thin and high relief EPU letters*
- *Pointed leaf with dip leaf*
- *No Doubling on Q*
- *Narrowest left leaf*
- *Rounded arrow tips*
- *Top two arrow tips quite apart from leaf*
- *Top arrow tip slightly smaller*
- *Left bud: above*
- *No serif on N*
- *Weak left inner wing Has an incuse line on the inside edges of the vertical wing segments.*

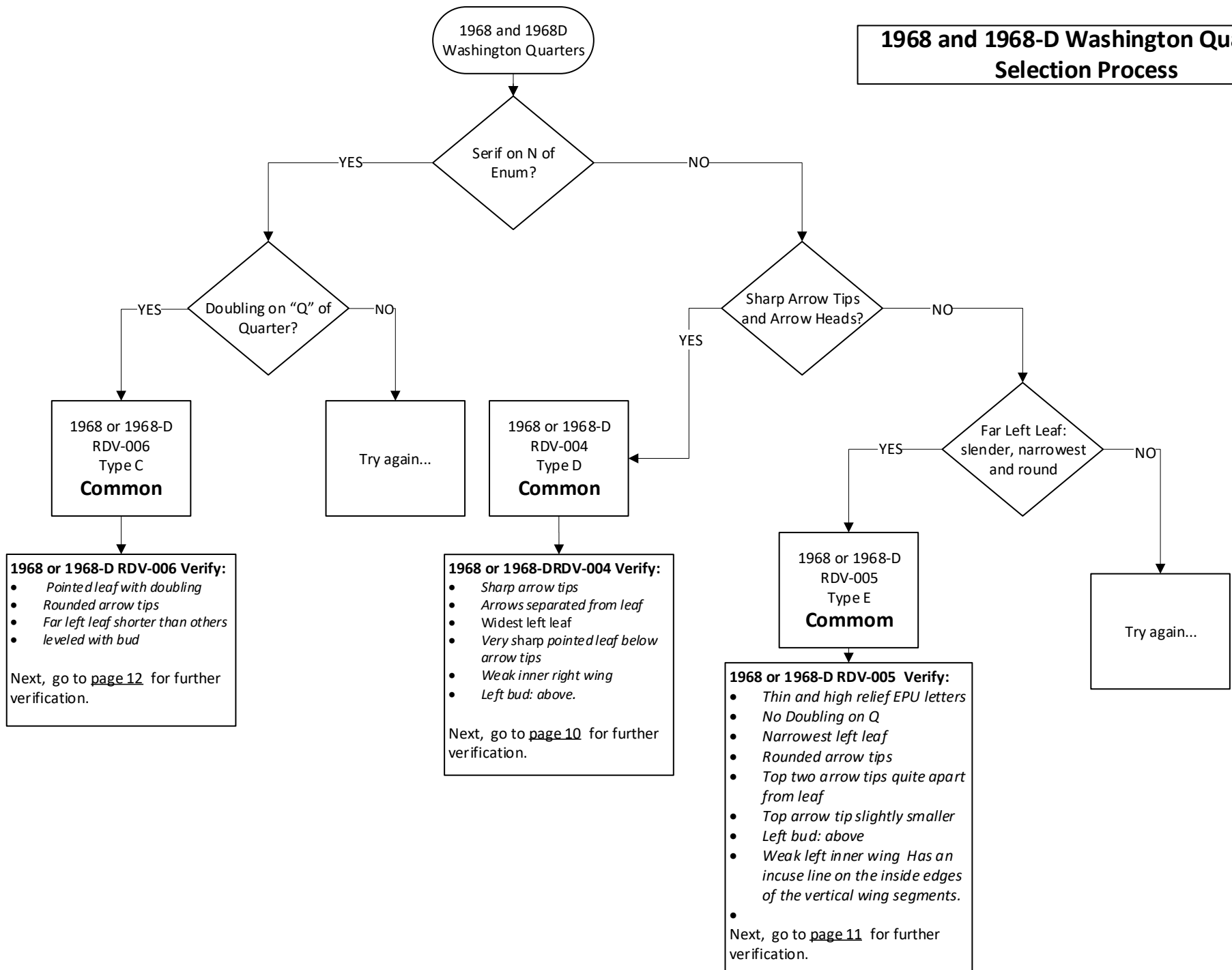
Next, go to [page 11](#) for further verification.

Try again...

1967 Washington Quarters Selection Process

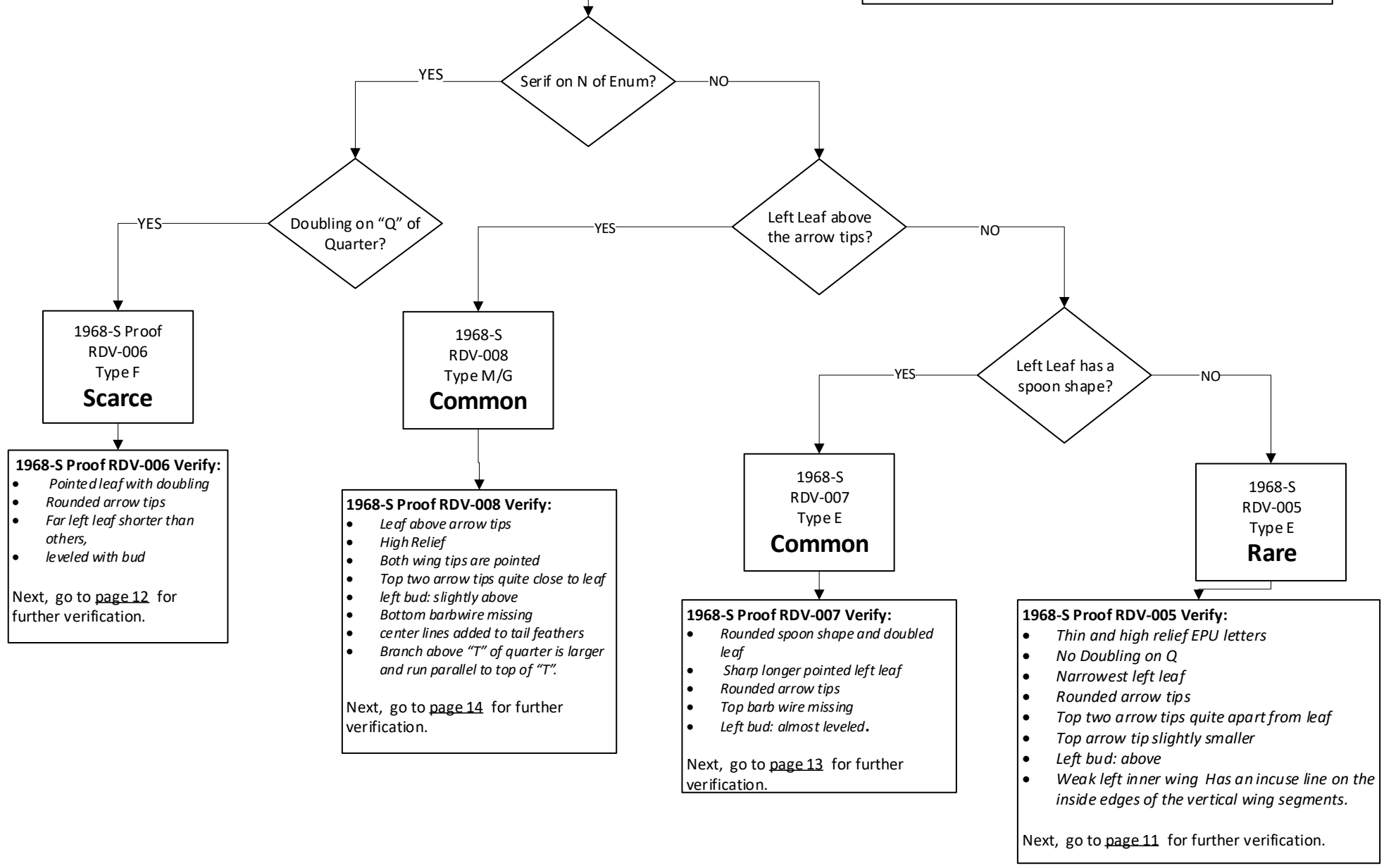


1968 and 1968-D Washington Quarters Selection Process

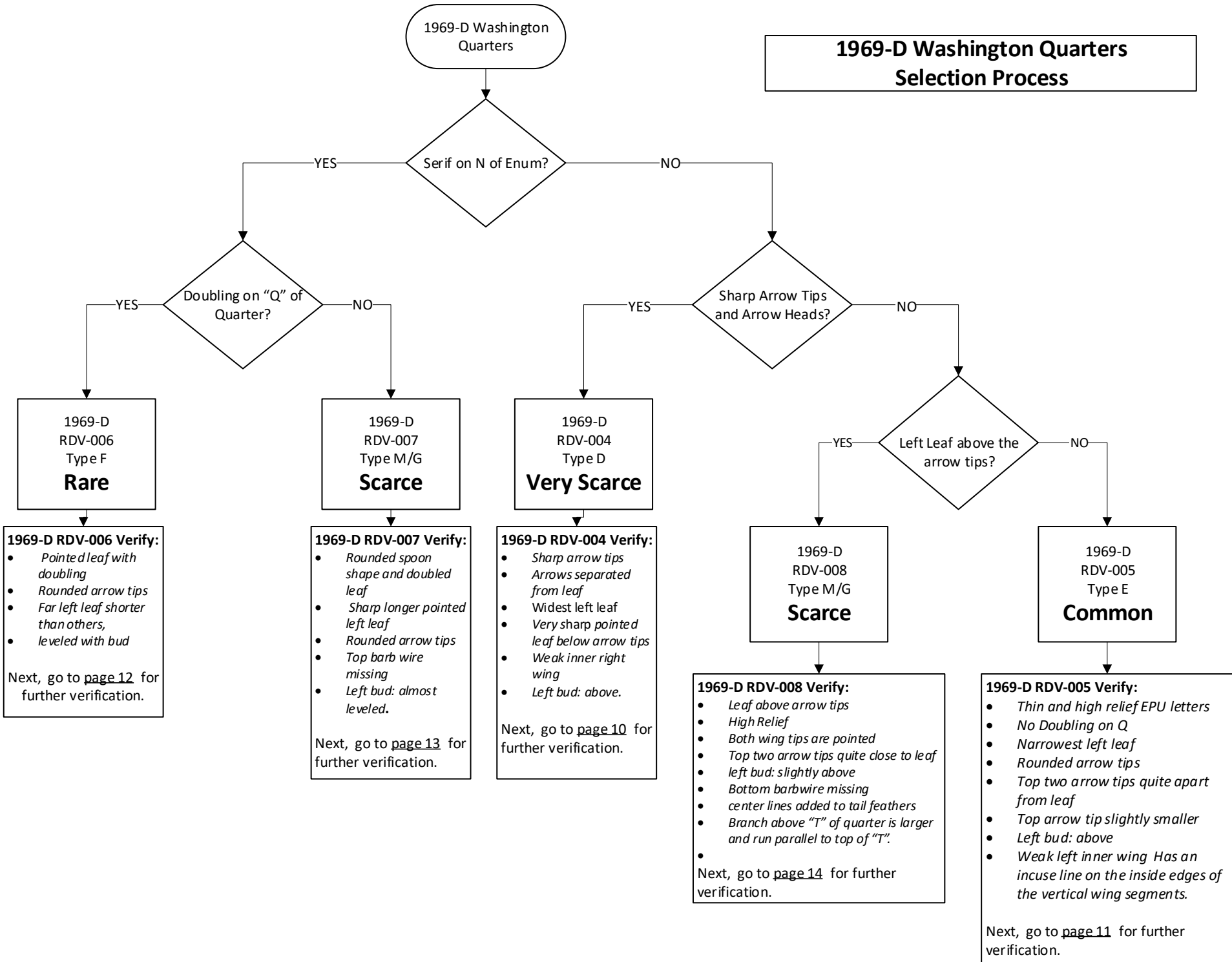


1968-S Proof
Washington Quarters

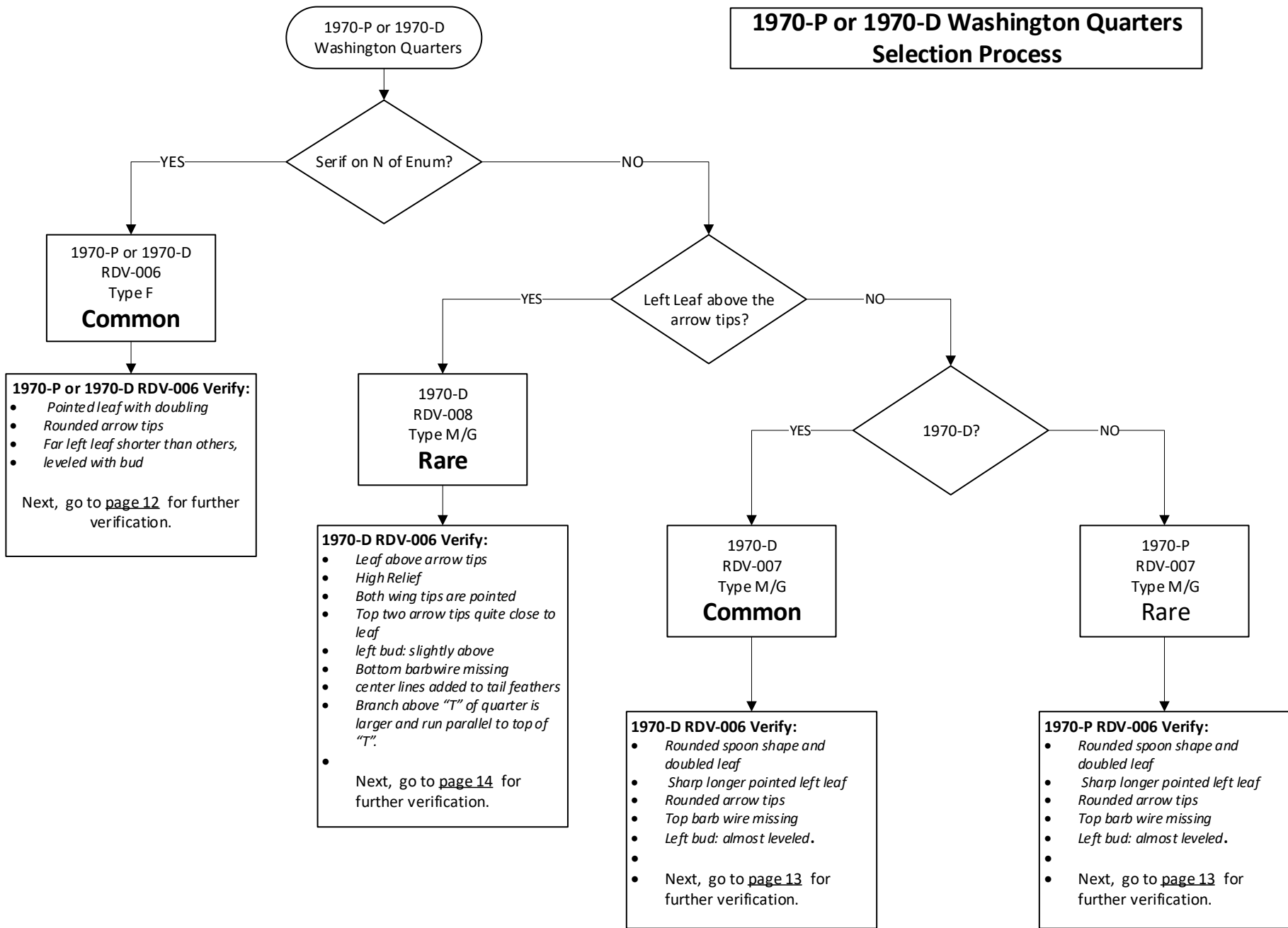
**1968-S Proof Washington Quarters
Selection Process**

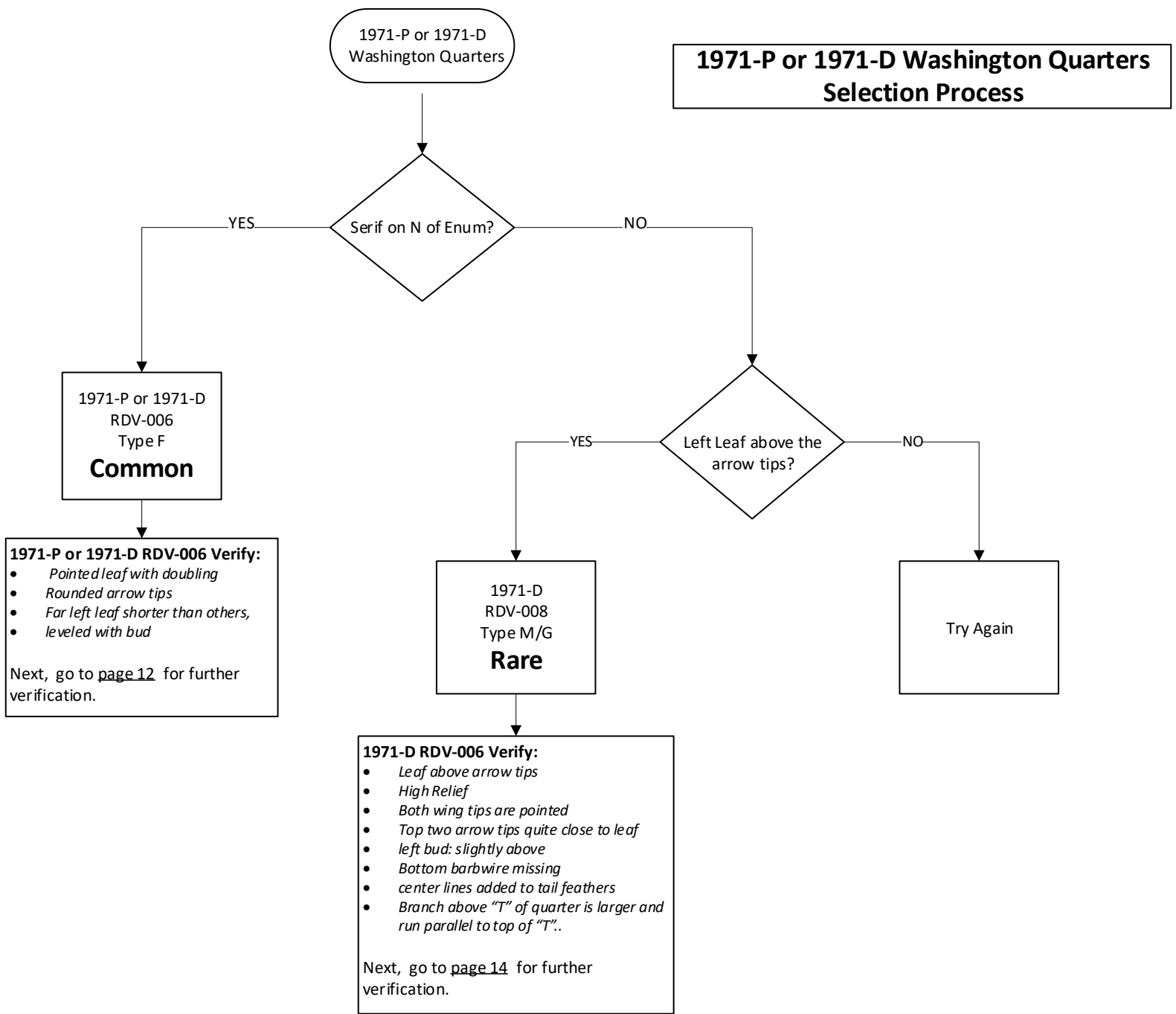


1969-D Washington Quarters Selection Process



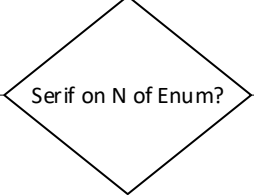
1970-P or 1970-D Washington Quarters Selection Process





1972-P or 1972-D Washington Quarters Selection Process

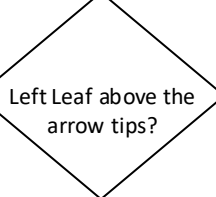
1972-P or 1972-D Washington Quarters



YES

NO

1972-P or 1972-D
RDV-006
Type F
Common



YES

NO

1972-P or 1972-D RDV-006 Verify:

- *Pointed leaf with doubling*
- *Rounded arrow tips*
- *Far left leaf shorter than others, leveled with bud*

Next, go to [page 12](#) for further verification.

1972-D
RDV-008
Type M/G
Rare

Try Again

1972-D RDV-008 Verify:

- *Leaf above arrow tips*
- *High Relief*
- *Both wing tips are pointed*
- *Top two arrow tips quite close to leaf*
- *left bud: slightly above*
- *Bottom barbwire missing*
- *center lines added to tail feathers*
- *Branch above "T" of quarter is larger and run parallel to top of "T".*

Next, go to [page 14](#) for further verification.

